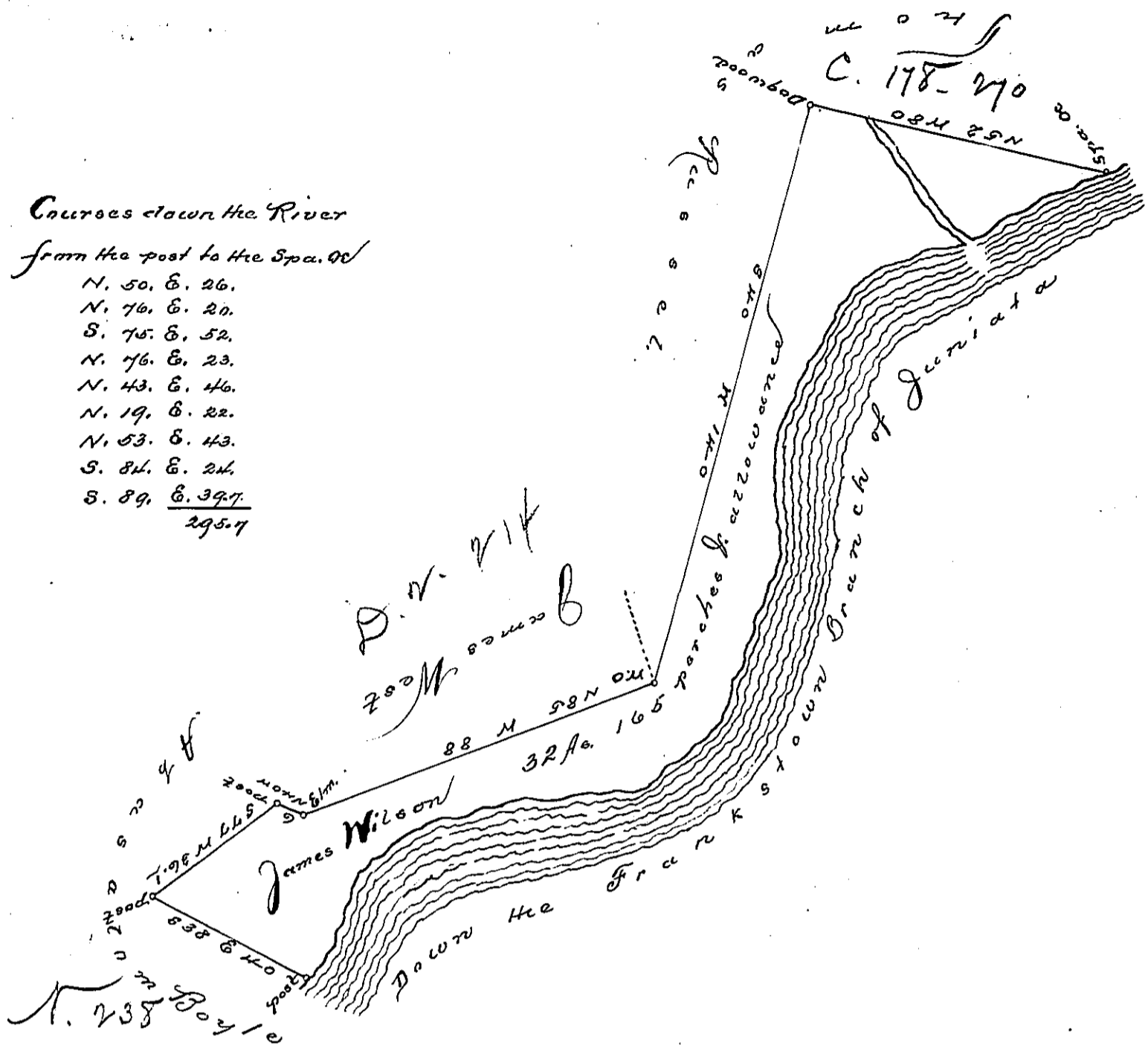


Courses down the River

from the post to the Spa. &c

- N. 50. E. 26.
 - N. 70. E. 20.
 - S. 75. E. 52.
 - N. 76. E. 23.
 - N. 43. E. 46.
 - N. 19. E. 22.
 - N. 53. E. 43.
 - S. 84. E. 24.
 - S. 89. E. 39.7
- 295.7



Situate in Frankstown Township Huntingdon County. ~~When~~ first surveyed the 7th day of June 1788 on warrant granted to James Wilson dated March 14th 1786. it then contained six acres & 33 perches & allowance. Now Resurveyed the 07th day of December 1813 in pursuance of an order of Resurvey granted to Samuel Duncan dated the 14th day of Sept 1813. Containing thirty two acres 165 perches and allowance.

Richard T. Leech Esq. }
 Surveyor General }
 Jno Morrison Esq.

IN TESTIMONY that the above is a copy of the original remaining on file in the Department of Internal Affairs of Pennsylvania, made conformably to an Act of Assembly approved the 16th day of February, 1833, I have hereunto set my Hand and caused the Seal of said Department to be affixed at Harrisburg, this

Third day of September 1895

James L. Patton
 Secretary of Internal Affairs.